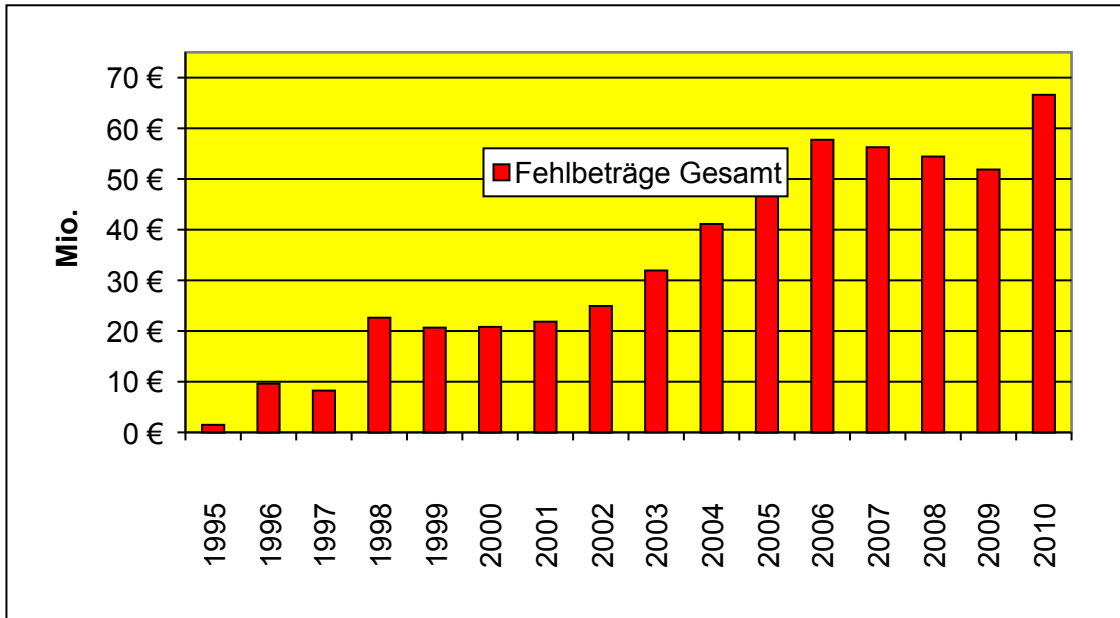
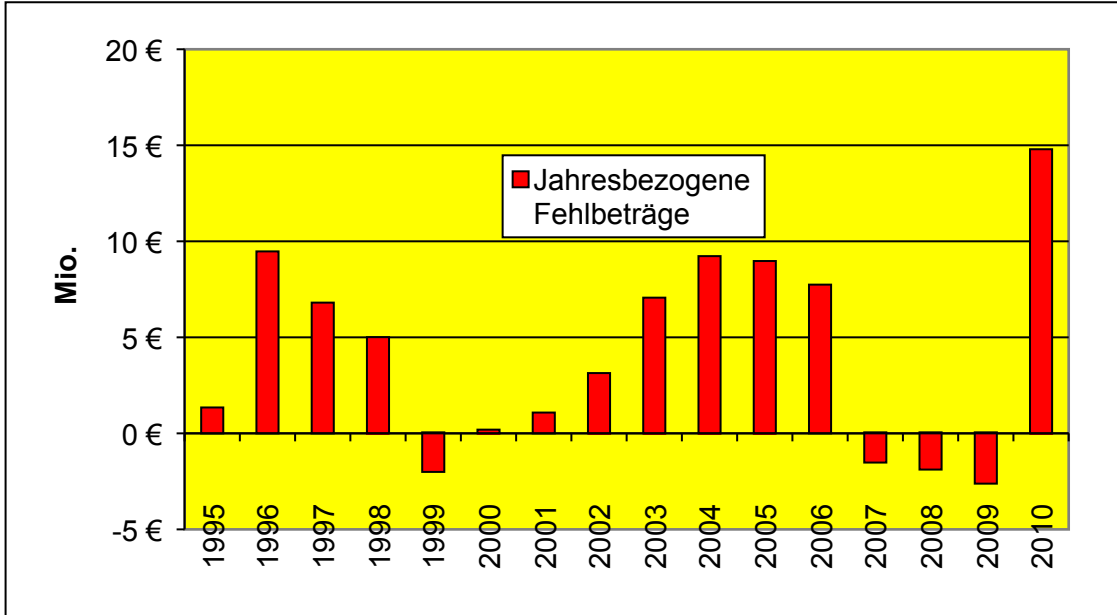


	FB jahresbez.	Einwohner:	FB / EW
1995	1.296.179	124.780	10
1996	9.422.756	126.189	75
1997	6.755.525	127.193	53
1998	4.958.098	128.079	39
1999	-1.955.835	129.074	-15
2000	141.200	130.326	1
2001	1.030.974	131.611	8
2002	3.087.074	132.374	23
2003	7.013.811	133.240	53
2004	9.176.568	133.924	69
2005	8.921.466	134.348	66
2006	7.692.143	134.454	57
2007	-1.468.715	134.452	-11
2008	-1.833.969	133.862	-14
2009	-2.566.500	133.216	-19
2010	14.742.200	132.172	112

1995	1.296.179
1996	9.422.756
1997	8.051.704
1998	22.432.559
1999	20.476.724
2000	20.617.924
2001	21.648.899
2002	24.735.973
2003	31.749.783
2004	40.926.352
2005	49.847.817
2006	57.539.961
2007	56.071.246
2008	54.237.277
2009	51.670.777
2010	66.412.977



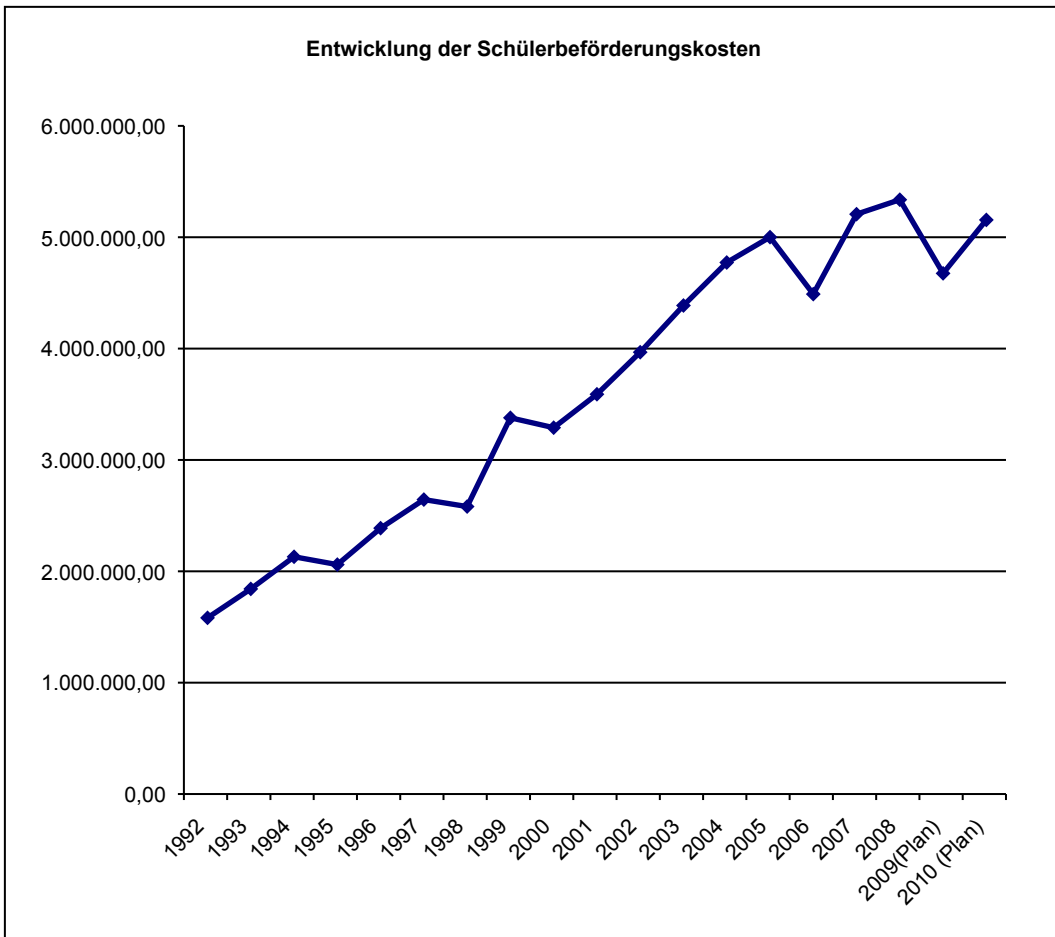
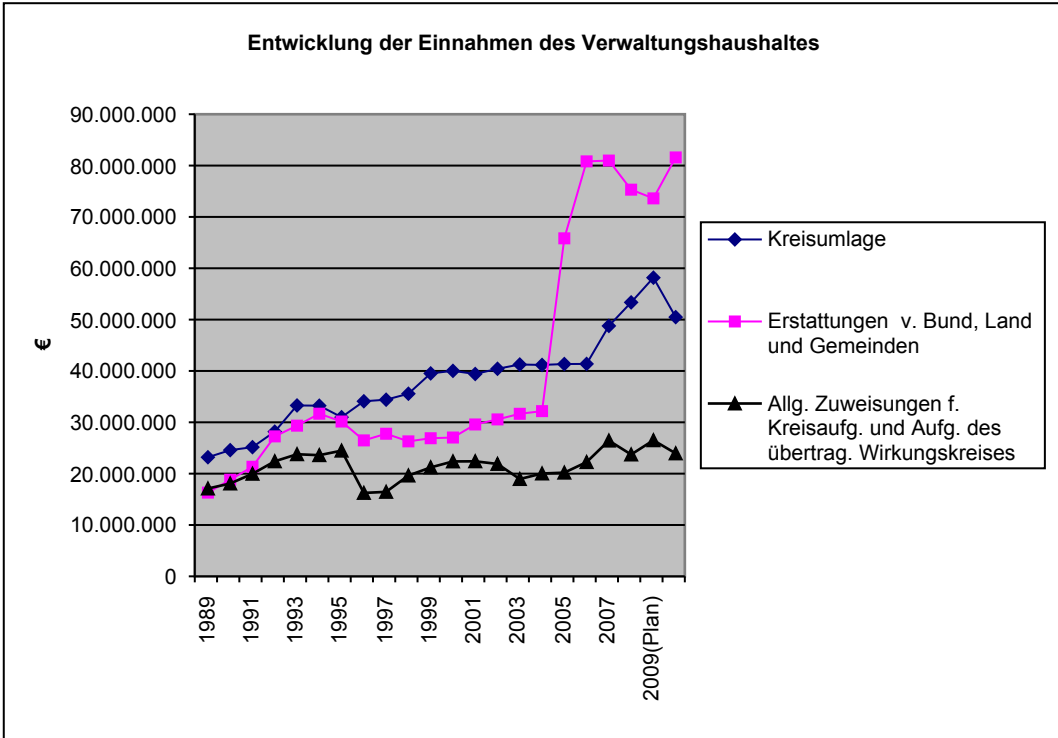
	<b>1989</b>	<b>1990</b>	<b>1991</b>	<b>1992</b>	<b>1993</b>	<b>1994</b>	<b>1995</b>	<b>1996</b>	<b>1997</b>
Kreisumlage	23.194.001	24.578.473	25.158.658	28.180.590	33.283.347	33.239.150	30.998.277	34.097.385	34.402.554
Erstattungen	16.309.051	18.813.592	21.341.082	27.256.533	29.347.342	31.677.433	30.151.498	26.476.853	27.772.371
Allg. Zuweisungen vom Land	17.102.471	18.077.343	19.971.612	22.400.290	23.777.541	23.595.307	24.477.567	16.245.357	16.451.993
Leist. d. Landes für SGB II					0	0	0	0	0

Schülerbeförderung:	<b>1992</b>	<b>1993</b>	<b>1994</b>	<b>1995</b>	<b>1996</b>	<b>1997</b>	<b>1998</b>	<b>1999</b>	<b>2000</b>
Ugr. 639	1.582.135,90	1.841.950,86	2.130.567,73	2.060.276,95	2.387.505,67	2.644.166,62	2.581.549,71	3.378.575,70	3.289.766,44
Einnahme	1.079,63	0,00	16.888,57	11.892,20	14.753,67	23.927,65	29.684,47	29.548,23	365.397,21
Zuschuss	1.581.056,27	1.841.950,86	2.113.679,16	2.048.384,75	2.372.752,00	2.620.238,97	2.551.865,24	3.349.027,47	2.924.369,23

1998	1999	2000	2001	2002	2003	2004	2005	2006	2007	2008
35.564.611	39.523.343	40.019.686	39.409.303	40.422.586	41.259.208	41.174.788	41.348.116	41.372.064	48.772.575	53.356.360
26.287.275	26.895.791	27.036.618	29.578.594	30.563.324	31.658.208	32.177.299	65.831.595	80.818.418	80.973.900	75.309.585
19.631.349	21.215.601	22.379.054	22.401.198	21.891.008	18.950.720	20.027.272	20.192.850	22.247.411	26.435.986	23.728.162
0	0	0	0	0	0	0	1.538.177	1.530.876	2.218.994	2.180.331

2001	2002	2003	2004	2005	2006	2007	2008	2009(Plan)	2010 (Plan)
3.589.994,43	3.967.469,38	4.386.988,11	4.772.986,89	5.000.912,49	4.489.165,54	5.207.065,21	5.336.971,68	4.675.600,00	5.155.600,00
146.129,55	58.773,92	121.916,80	69.826,56	33.330,28	58.242,54	87.373,90	46.212,00	54.934,65	71.000,00
3.443.864,88	3.908.695,46	4.265.071,31	4.703.160,33	4.967.582,21	4.430.923,00	5.119.691,31	5.290.759,68	4.620.665,35	5.084.600,00

<b>2009(Plan)</b>	<b>2010 (Plan)</b>
58.167.100	50.482.500
73.610.900	81.586.500
26.499.500	23.945.200
2.200.000	2.450.000



	1999	2000	2001	2002	2003	2004	2005	2006	2007	2008	2009 (Plan)
<b>Sozialhilfe außerhalb v. Einrichtungen</b>	15.632.845	15.641.655	16.171.039	16.496.541	16.898.133	16.787.762	3.651.199	3.811.534	3.805.021	3.987.344	4.003.000
<b>Sozialhilfe in Einrichtungen</b>	17.656.879	19.492.537	18.329.104	20.363.451	19.441.635	21.716.198	23.263.966	22.621.965	22.220.822	23.251.234	23.186.000
<b>Leistungen der Jugendhilfe Sonstige (z.B. WG, UVG, Grundsicherung)</b>	4.428.095	4.785.172	5.435.617	5.983.926	5.635.769	5.589.570	6.080.550	6.692.564	7.961.576	7.992.800	8.646.800
<b>Arbeitslosengeld II Leistungen nach dem AsylbLG</b>	5.420.825	5.231.294	6.404.660	6.556.457	9.628.450	10.491.344	5.544.056 49.266.172	6.037.327 68.717.148	6.503.200 67.785.808	6.957.751 65.556.489	7.230.000 66.733.800
<b>Gesamt ohne ALG II</b>	4.791.024	3.792.825	3.970.350	3.734.415	3.725.256	3.522.478	3.412.966	2.823.391	2.490.158	2.002.662	2.336.500
<b>Gesamt mit ALG II</b>	47.929.668	48.943.483	50.310.770	53.134.790	55.329.243	58.107.351	41.952.737	41.986.781	42.980.777	44.191.791	45.402.300
<b>Gesamt mit ALG II</b>	47.929.668	48.943.483	50.310.770	53.134.790	55.329.243	58.107.351	91.218.909	110.703.929	110.766.586	109.748.280	112.136.100

	2004	2005	2006	2007 (Plan)	2008 (Plan)	2010 (Plan)
<b>Sozialhilfe außerhalb v. Einrichtungen</b>	16.787.762	3.651.199	3.811.534	3.805.021	3.987.344	4.997.000
<b>Sozialhilfe in Einrichtungen</b>	21.716.198	23.263.966	22.621.965	22.220.822	23.251.234	25.172.000
<b>Leistungen der Jugendhilfe Sonstige (z.B. WG, UVG, Grundsicherung)</b>	5.589.570	6.080.550	6.692.564	7.961.576	7.992.800	8.646.800
<b>Leistungen nach dem AsylbLG</b>	10.491.344	5.544.056	6.037.327	6.503.200	6.957.751	8.058.000
<b>Arbeitslosengeld II</b>	3.522.478	3.412.966	2.823.391	2.490.158	2.002.662	1.775.000
	0	49.266.172	68.717.148	67.785.808	65.556.489	

	1999	2000	2001	2002	2003	2004	2005	2006	2007	2008	2009 (Plan)
<b>Sozialhilfe außerhalb v. Einrichtungen</b>	15.632.845	15.641.655	16.171.039	16.496.541	16.898.133	16.787.762	3.651.199	3.811.534	3.805.021	3.987.344	4.003.000
<b>Sozialhilfe in Einrichtungen</b>	17.656.879	19.492.537	18.329.104	20.363.451	19.441.635	21.716.198	23.263.966	22.621.965	22.220.822	23.251.234	23.186.000
<b>Leistungen der Jugendhilfe Sonstige (z.B. WG, UVG, Grundsicherung)</b>	4.428.095	4.785.172	5.435.617	5.983.926	5.635.769	5.589.570	6.080.550	6.692.564	7.961.576	7.992.800	8.646.800
<b>Arbeitslosengeld II</b>	5.420.825	5.231.294	6.404.660	6.556.457	9.628.450	10.491.344	5.544.056 0	6.037.327 49.266.172	6.503.200 68.717.148	6.957.751 67.785.808	7.230.000 66.733.800



**Leistungen nach dem**

**AsylbLG**

**Gesamt ohne ALG II**

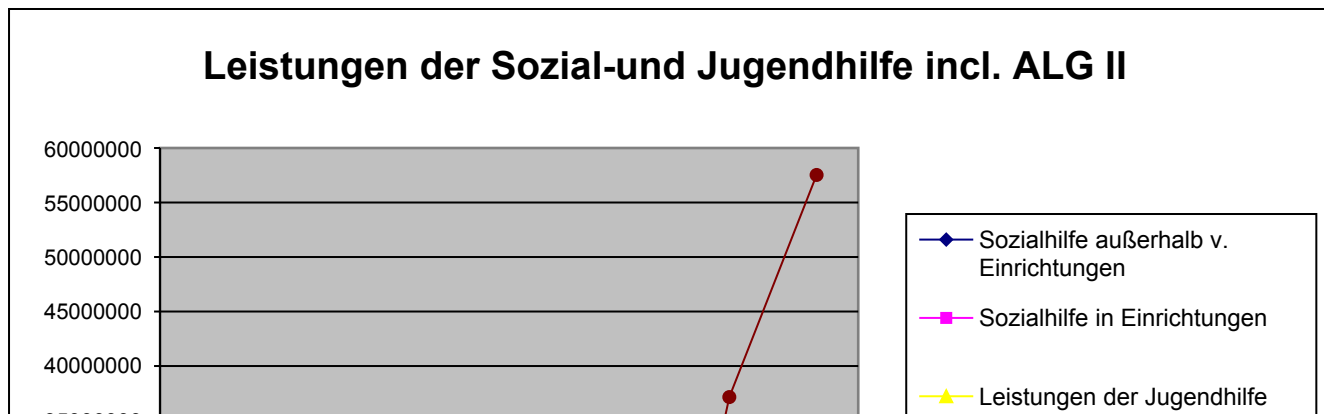
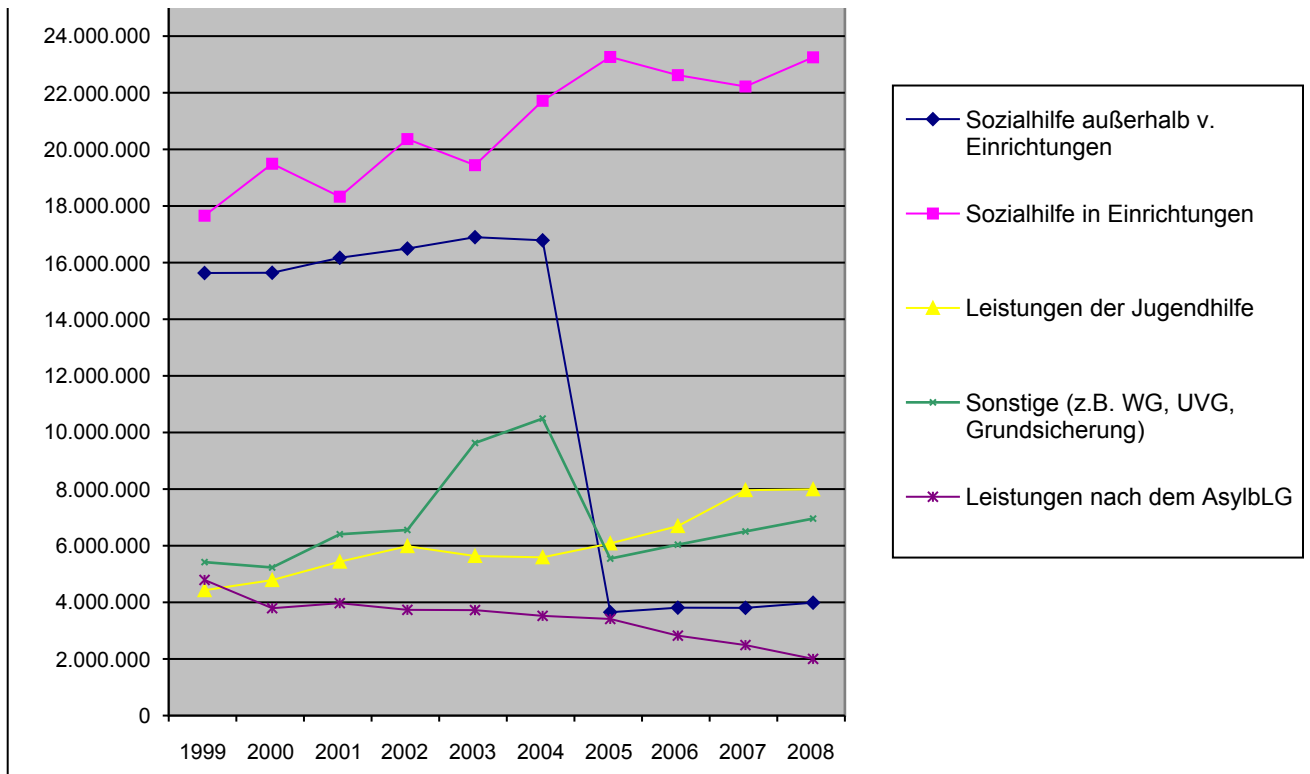
**Gesamt mit ALG II**

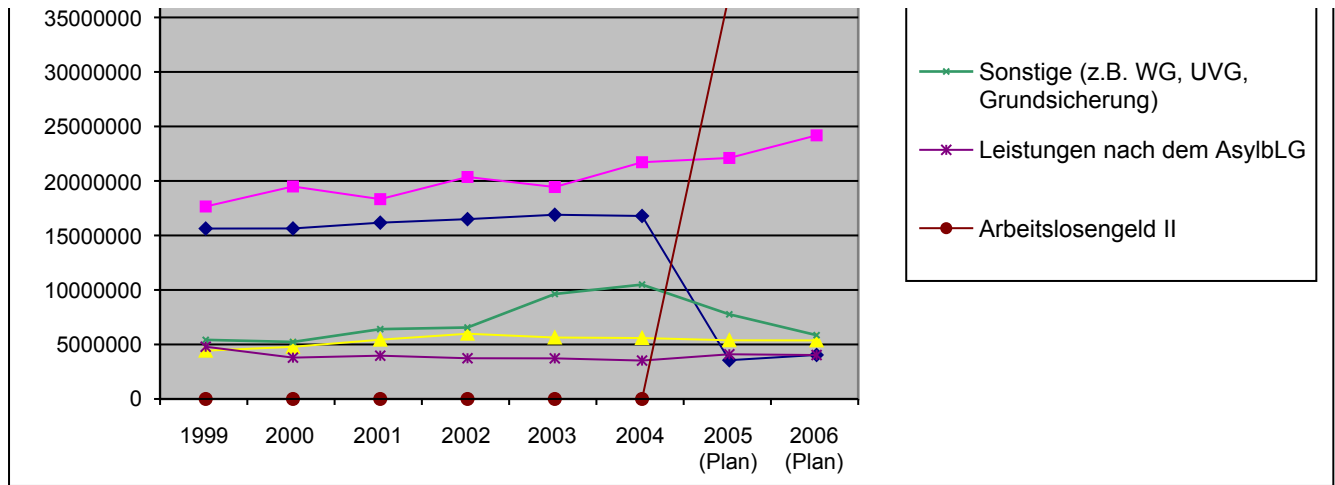
4.791.024	3.792.825	3.970.350	3.734.415	3.725.256	3.522.478	3.412.966	2.823.391	2.490.158	2.002.662	2.336.500
47.929.668	48.943.483	50.310.770	53.134.790	55.329.243	58.107.351	41.952.737	41.986.781	42.980.777	44.191.791	45.402.300
47.929.668	48.943.483	50.310.770	53.134.790	55.329.243	58.107.351	91.218.909	110.703.929	110.766.586	109.748.280	112.136.100

**Leistungen der Sozial-und Jugendhilfe ohne ALG II**

26.000.000







2010 (Plan)

4.997.000

25.172.000

8.646.800

8.058.000

74.804.300

1.775.000

48.648.800

123.453.100

2010 (Plan)

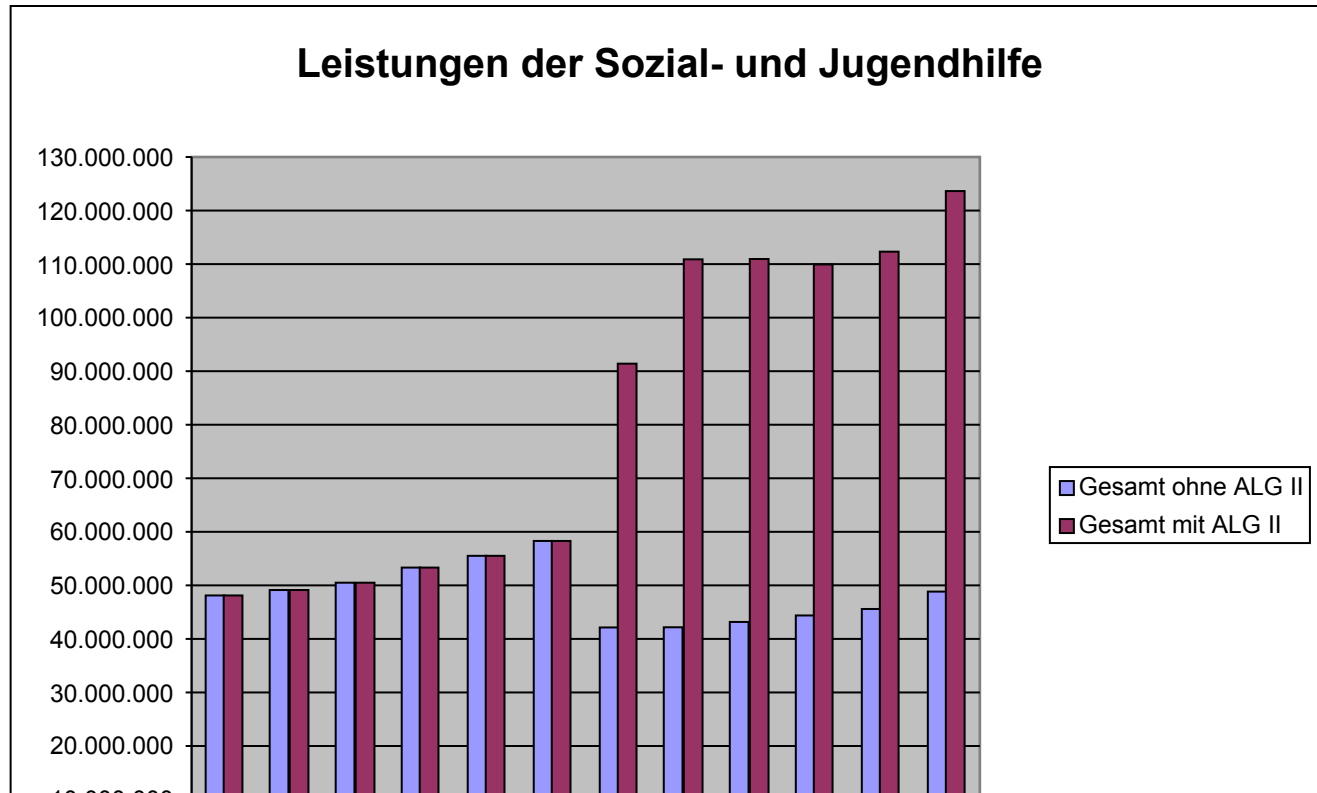
4.997.000

25.172.000

8.646.800

8.058.000

74.804.300



1.775.000  
48.648.800  
123.453.100

